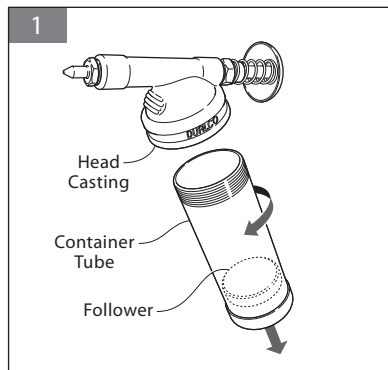


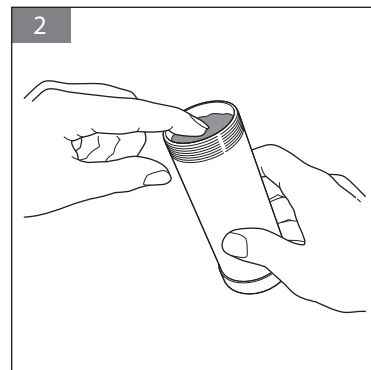
# Push Type Utility Grease Gun

## Filling Instructions • Caution: Use Clean Lubricant

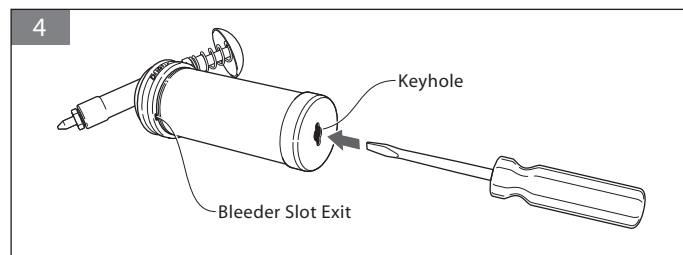
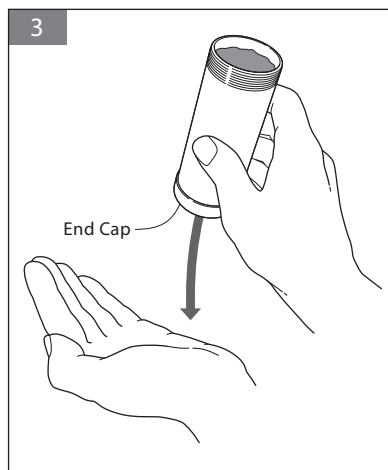
- 1. Unscrew the Container Tube assembly from the Head Casting.



- 2. Pack with fresh, clean lubricant through the open end of the Container Tube assembly. **Apply gradually to eliminate air pockets.**



- 3. Tamp lubricant down solidly in the Container Tube by tapping the closed end lightly against the palm of the hand. Continue to add lubricant until the tube is completely filled and the metal Follower rests against the Container Tube End Cap.

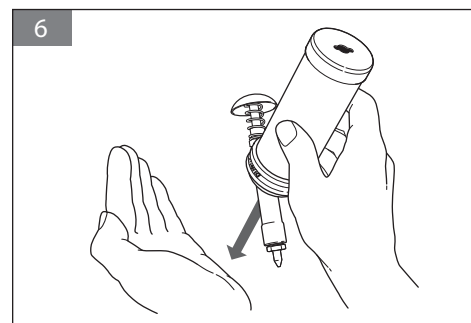
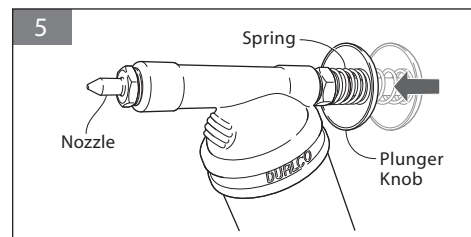


- 4. To prime the grease gun, screw the Container Tube assembly into the Head Casting **almost all the way**. Then insert a screw driver or rod through the "keyholed" tube end cap, exerting pressure against the metal follower. This pressure will expel any trapped air past the tube threads. When lubricant begins to slightly ooze through the **bleeder slot exit**, tighten the Container Tube assembly **securely** into the Head Casting.

## Operating Instructions

- 5. Operate by pushing the PLUNGER KNOB forward and allowing the SPRING to return the PLUNGER KNOB for the next stroke.
- Hold NOZZLE firmly against fitting or grease port. Push PLUNGER KNOB forward with rapid, complete strokes until sufficient lubricant has been pumped into service area.
- If the lubricant does not flow from the NOZZLE in a solid stream, it is an indication that either all the air has not been expelled from the CONTAINER TUBE, or foreign particles have lodged beneath the CHECK BALL preventing it from seating.
- REMEDY: Remove NOZZLE from HEAD CASTING, and withdraw CHECK SPRING and CHECK BALL. (See replacement parts diagram) Clean CHECK BALL and SEAT, then replace parts. Invert the GUN and tamp the HEAD CASTING end against the palm of the hand to jar lubricant into the PLUNGER cavity of the HEAD CASTING. ( Fig. 6 ) Refer to Fig. 4 for priming.

**NOTE:** In order to prevent lubricant leakage, make certain all threaded components are securely tightened, and all parts are present and in good working order.



# DUALCO

All Rights Reserved. © Copyright 2013 DUALCO Inc.

DUALCO • 8404 Braniff, Houston, Texas 77061  
713-644-1164 • FAX 713-644-7761  
www.dualco-inc.com  
E-Mail: dualco@dualco-inc.com



Manufacturers of  
Professional Lubrication  
Equipment since 1960  
Made in USA

